

THE **COWGIRL™**

PREMIUM SEX MACHINE

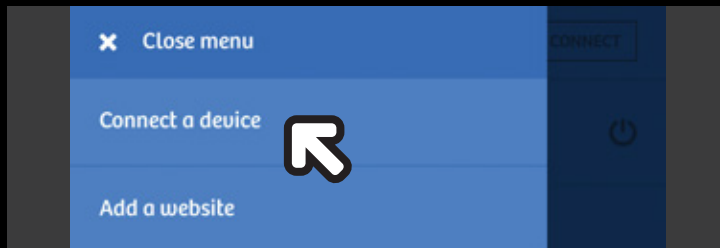


FEELME SETUP GUIDE

FEELME SETUP GUIDE

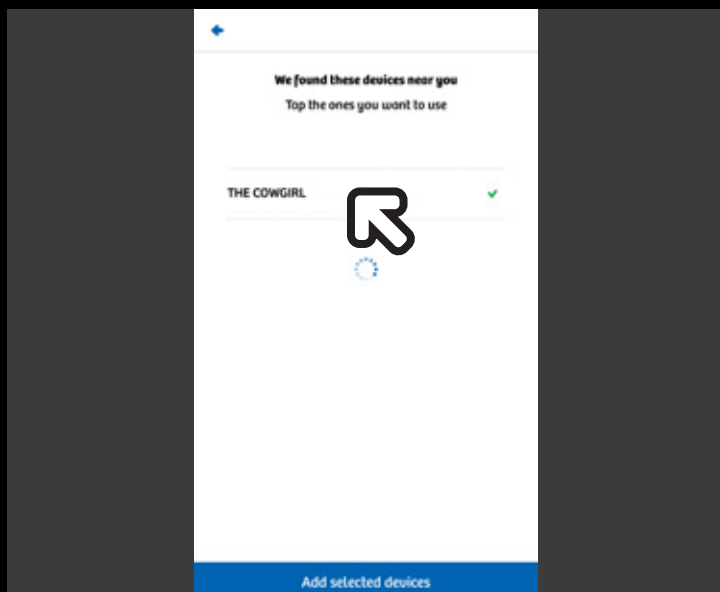
How to connect with a partner from a distance:

1. Download the **FEELCONNECT** app on the iOS App Store or Google Play Store on both your partner's and your mobile device.
2. Once you have downloaded the app, plug in your Cowgirl into a wall power source.
3. For Bluetooth mode, please remember to **NOT** plug in the wired remote control. If the wired remote is plugged in, the Bluetooth mode will be disabled. Should you have troubles pairing, disconnect your Cowgirl from wall power source. Should you require additional information, consult **The Cowgirl user guide troubleshooting section**.
4. Select the Menu ☰ on the app, and then select **"Connect A Device"**.



Click "Connect a device" on your mobile app

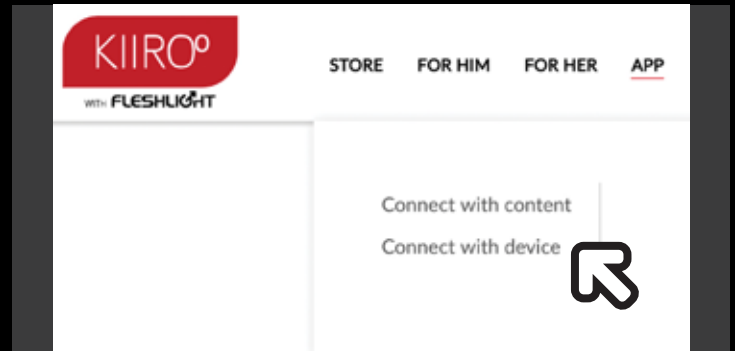
5. Select **"THE COWGIRL"**, then click "Add selected devices".



Select "THE COWGIRL" and "Add selected devices"

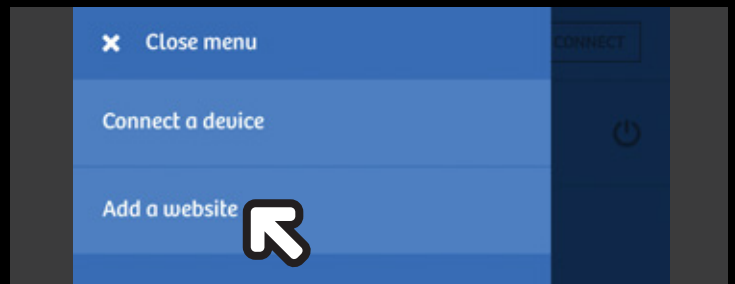
6. Once your device has been connected, go to www.kiiroo.com/connect-to-device on a desktop or laptop computer.

7. Under the website's dropdown menu, select **"Connect with device"**.



Click "Connect with device" on the desktop website

8. On your device, select **"Add a website"** from the menu.



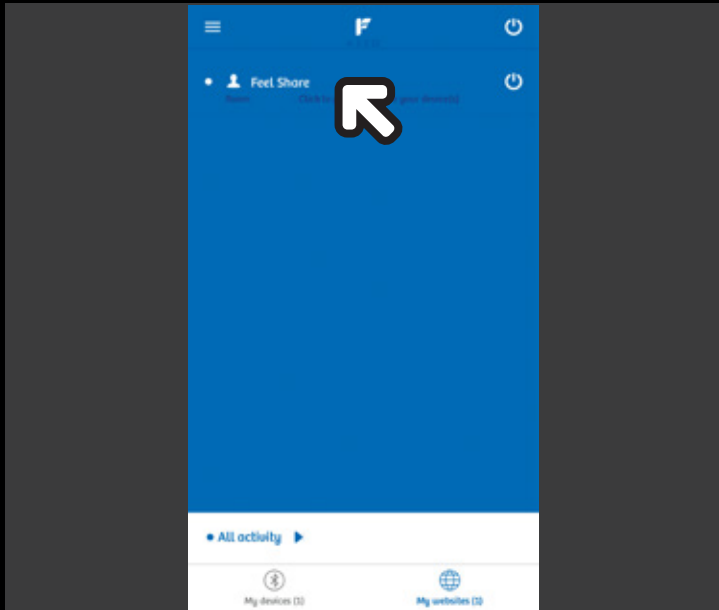
Click "Add a website" on your mobile app

9. Scan the QR code on **Kiiroo.com** with the app on your device, you are now connected.

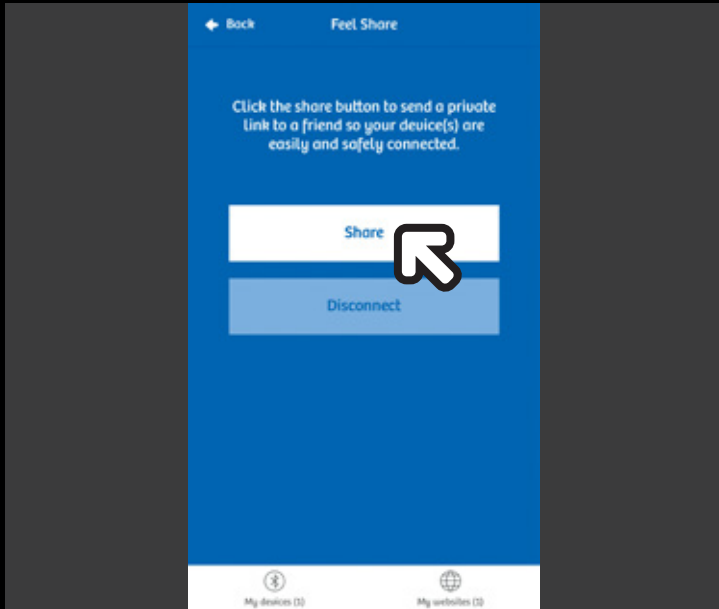


Scan the QR code on the Kiiroo website with your mobile app

10. On your device, click on the “Feel Share” option and a window will pop up stating whether to share or disconnect your device.



Click “Feel Share” on your mobile app



Click “Share” on your mobile app to select a range of different options on sharing your private link with your partner

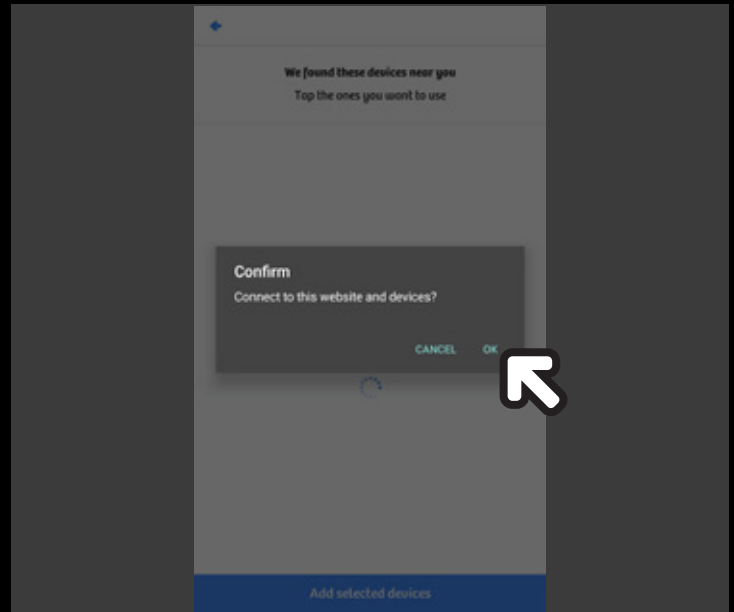
11. After you have clicked on “Share”, the app will give you several options on where you can share your specific room number with.



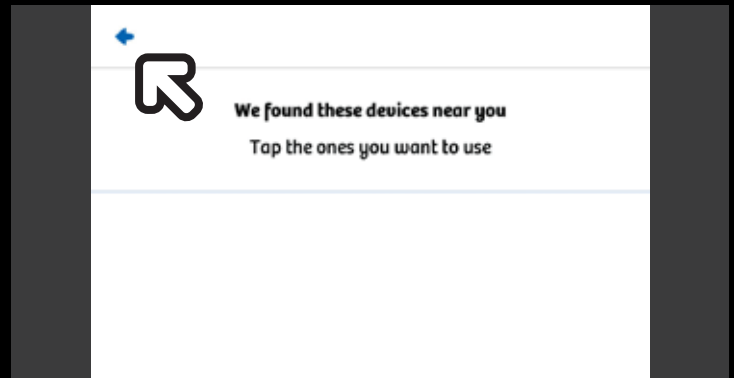
You can share the link via SMS, email, Facebook, Whatsapp etc

12. When your partner clicks on the link, the FEELCONNECT app on his device will start.

13. Your partner will be prompted to confirm the connection establishment between his app and your Cowgirlt. Click “OK” to proceed.



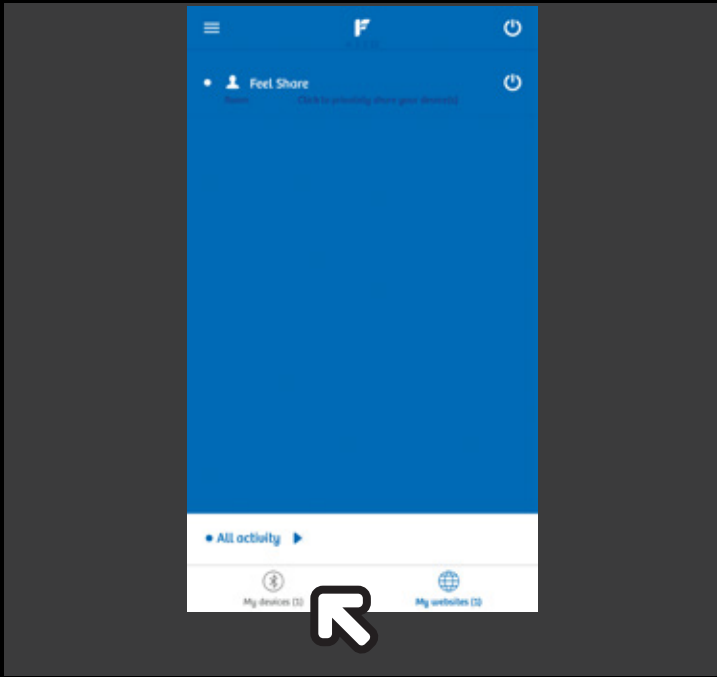
When prompted, your partner clicks “OK” on his mobile app to proceed



Click on the back arrow to dismiss the confirmation screen

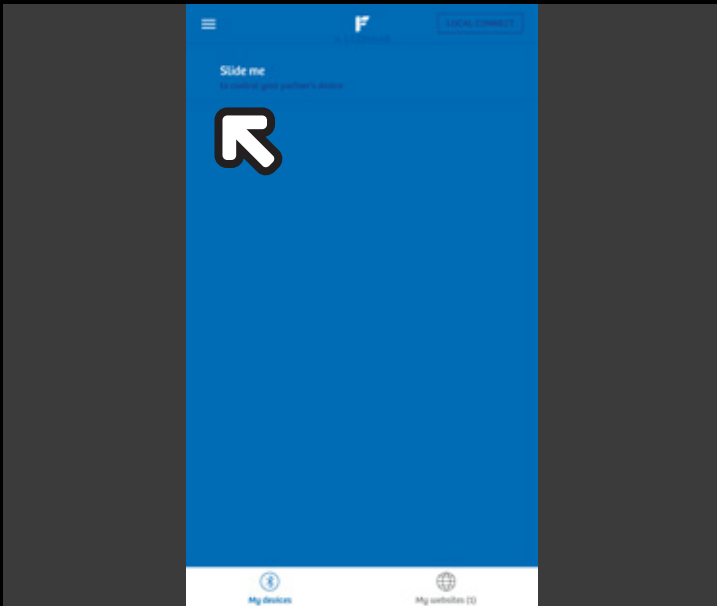
**CONTINUED ON
THE NEXT PAGE**

15. The app will now display the active connection page. To begin controlling your Cowgirl, your partner will need to click on the “My devices” page tab to access the control screen.

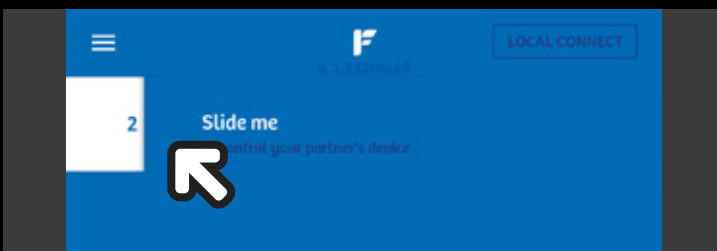


Click “My devices” page tab on your partner’s mobile app

16. The app will now display the control screen. To begin using controlling your Cowgirl, simply slide the “Slide me” slider to the right.



Slide right on the slider to activate the Cowgirl



The control settings will appear when the slider is engaged. The maximum control setting for now is 4. More will be added to the app in future updates.

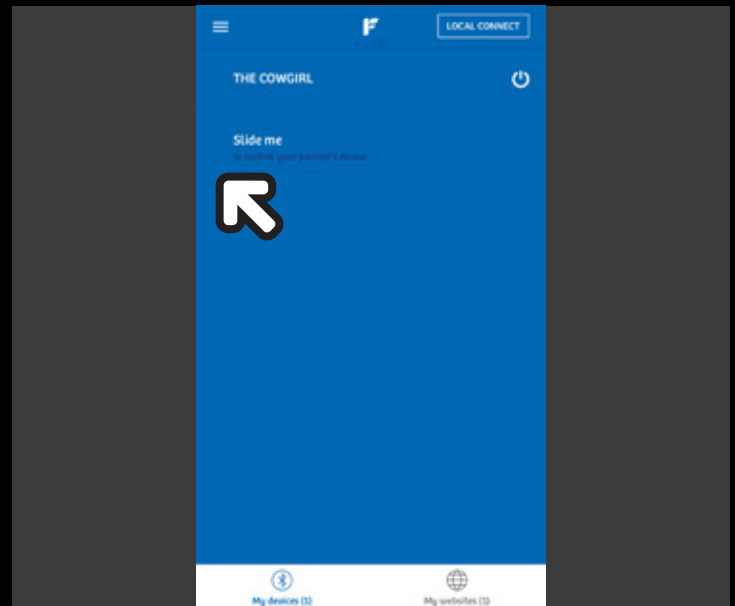
How to connect with a partner that is in the same proximity:

1. Download the **FEELCONNECT** app on the iOS App Store or Google Play Store on your partner’s device.
2. Connect your partner’s device to the **FEELCONNECT** app as mentioned previously in the “**HOW TO CONNECT WITH A PARTNER FROM A DISTANCE**” section of this setup guide.
3. Once his device has been connected, click “**LOCAL CONNECT**” to begin.

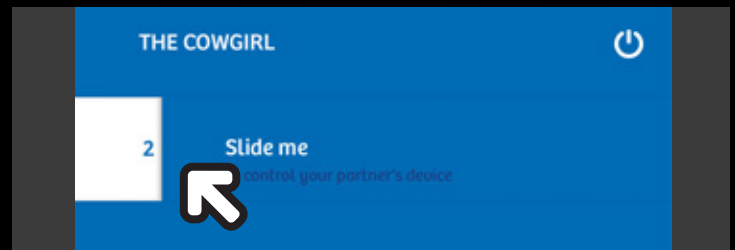


Click “LOCAL CONNECT” on your partner’s mobile app

4. The app will now display the control screen. To begin using controlling your Cowgirl, simply slide the “Slide me” slider to the right.



Slide right on the slider to activate the Cowgirl



The control settings will appear when the slider is engaged.



For instructions in other languages and the latest information, visit www.ridethecowgirl.com/app